

**Rotary International
District 1220
International Committee**



**ROTARY:
MAKING A
DIFFERENCE**

Handbook 2017/18

**PDG Rtn Wendy Watson
Co-ordinator – International**

International Committee Members

PDG Rtn Wendy Watson (Mexborough & District) (Co-ordinator) (RIBI International Committee)	wendy@mexboro.demon.co.uk Tel: 01709 587866
Rtn Jill Bethell (Drone Valley)	jillbethell@doctors.org.uk Tel: 01246 413276
Rtn Tony Bethell (Dronfield) (ADG Liaison)	tonyb@doctors.org.uk Tel: 01246 413276
Rtn Owen Briggs (Ripley)	owen.j.vanman@gmail.com Tel: 07966 739047
Rtn Brin Chawla (West Bridgford)	brin.brintech@talktalk.net Tel: 0115 923 1689
Rtn Iain Corran (Chesterfield Scarsdale)	iainlowerbullens@btinternet.com Tel: 07719 712785
Rtn David Hood (Wirksworth)	davidandjanehood@gmail.com Tel: 07951 268678
Rtn Jake Jackson (Eckington & District)	michael.p.jackson@hotmail.co.uk Tel: 01246 430372
Rtn Nick Jackson (Long Eaton Dawnbreakers)	1302nick@gmail.com Tel: 0115 930 3281
Rtn Keith Jones (Hope Valley) (Friendship Officer)	kjones100@gmail.com Tel: 01246 297536
Rtn Chris Lamb (Wirksworth)	cflamb@yahoo.co.uk Tel: 07836 368037
Rtn Rosalind Lunt (Drone Valley)	rosalindlunt@gmail.com Tel: 07952 016251
Rtn Ian Ord (Sheffield Vulcan)	iangord@icloud.com Tel: 01433 621431
Rtn Ian Ward (Dronfield)	i.ward768@btinternet.com Tel: 07786 415504

Rotary International District 1220 International Committee Handbook 2017/18

Contents

	Page
International Committee Members	C2
Foreword by District Governor Michael Longdon	2
Role of District International Committee	3
Rotarian Action Groups	4
Disaster Response	6
RIBI Approved International Projects	7
Disaster – Which Product Works Best?	8
RIBI OTS International Projects	12
Aquabox	13
Rotary Friendship Exchange	14
International Charities – Speakers	15
International Committee Meetings 2017/18	C3

Foreword by District Governor Michael Longdon

I am delighted to have been invited to write the foreword for this year's District International Handbook. International Service is Rotary's Fourth Avenue of Service – "The advancement of international understanding, goodwill, and peace through a world fellowship of business and professional persons united in the ideal of service".

We often think of International Service when we have a major disaster both internationally and locally. However, we often forget about the tremendous amount of work Rotarians undertake every year providing clean water and sanitation, refurbishing and building new schools and hospitals, and providing emergency shelter for communities wherever in the world it is needed.

Many Clubs within our District already carry out projects with partners from overseas to foster goodwill and the advancement of our International Service. It is this International Service which makes us unique with our Global Platform of Community Service throughout the world. This year our International Theme is – **ROTARY: MAKING A DIFFERENCE**. Can I please ask that District 1220 becomes a shining light for a successful year of Making A Difference!

I would like to take this opportunity to thank the members of the 2017/2018 District International Team for producing this handbook and to wish them all the very best as you Make A Difference!

Michael

Role of the District International Committee

The role of the District International Committee is two-fold:

To collate information from RI, RIBI and other sources about disasters that occur overseas and to co-ordinate any action required at District and Club level; making contact with any appropriate organisations and ensuring that Clubs in the District are kept apprised of the ongoing situation, informing them of recommended courses of action where appropriate.

To provide Clubs with information as to RIBI approved overseas projects and charitable causes that they may wish to become involved with; to give appropriate advice and guidance and to ensure that any involvement is ethical and within the rules of Rotary International. Our goal is to give support in the following areas:

Water, Sanitation and Hygiene
Hunger and Poverty
Health
Education and Literacy



ROTARIAN ACTION GROUPS

Rotarian Action Groups help Rotary clubs and districts plan and carry out community development and humanitarian service projects in their area of expertise. The groups are organized by Rotarians and Rotaractors who are proficient, and have a passion for service, in a particular field.

HOW ROTARIAN ACTION GROUPS OPERATE

- Each group functions independently of Rotary International establishing its own rules, dues requirements, and administrative structure.
- Membership is open to Rotarians, their family members as well as participants and alumni of all Rotary and Foundation programs.
- Rotarian Action Groups must adopt Rotary International's standard bylaws and operate in accordance with Rotary policy.
- Rotarian Action Groups regularly collaborate with clubs and districts on service projects in their area of specialty.
- Rotarian Action Groups can help clubs and districts obtain funding or other assistance for their service projects.



BENEFITS OF ROTARIAN ACTION GROUPS

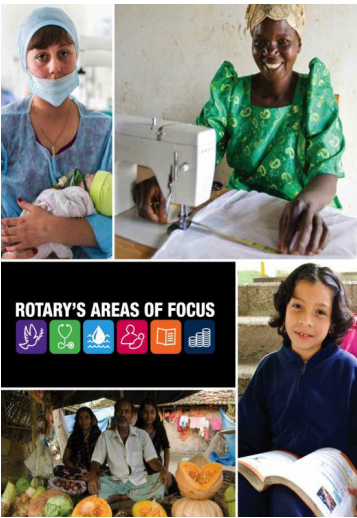
- By joining a Rotarian Action Group, you can engage in meaningful service activities outside your own club, district, or country.
- By partnering with a Rotarian Action Group, your club or district gains the support of experts for planning and implementing a project.



TAKE ACTION: www.rotary.org/actiongroups

ROTARIAN ACTION GROUPS

Do you have expertise and a passion to serve in a particular area?
Visit the website of the relevant Rotarian Action Group to learn more.



AIDS and Family Health	www.rfha.org
Alzheimer's and Dementia	http://adrag.org/
Blindness Prevention	www.rag4bp.org
Blood Donation	www.ourblooddrive.org
Child Slavery	www.racsrag.org
Clubfoot	www.rag4clubfoot.org
Dentistry	www.ragd.com
Diabetes	www.ragdiabetes.org
Disaster Assistance	www.dna-rag.com
Endangered Species	www.endangeredrag.org
Environmental Sustainability	www.esrag.org
Food Plant Solutions	http://foodplantsolutions.org
Health Education and Wellness	www.hewrag.org
Hearing	www.ifrahl.org
Hunger and Malnutrition	www.alleviatehunger.org
Literacy	www.litrag.org
Malaria	www.remarag.org
Mental Health	kenlefrancois@bell.net
Microfinance and Community Development	http://ragm.org
Multiple sclerosis	www.rotary-rfmsa.org
Peace	www.rotarianactiongroupforpeace.org
Polio Survival	www.rotarypoliosurvivors.com
Population and Development	www.rifpd.org
Preconception Care	www.ragphc.org
Water and Sanitation	www.wasrag.org

START A NEW ROTARIAN ACTION GROUP

If your service interest isn't represented by an existing Rotarian Action Group, contact Rotary staff at actiongroups@rotary.org to learn how you can start a new group. All groups are subject to approval by the Rotary International Board of Directors.

EXAMPLES OF ROTARIAN ACTION GROUPS IN ACTION

- The Rotarian Action Group for Population & Development works with Rotary clubs in Germany, Austria, and Nigeria to reduce mortality rates among mothers and newborns at hospitals in rural Nigeria.
- Rotarians for Family Health & AIDS Prevention sponsors an annual event to provide preventive health care services, including HIV testing and counseling, to thousands of people in hundreds of sites across Africa.
- The Rotarian Action Group for Microfinance and Community Development connects Rotary clubs and districts with microfinance institutions to help poor people establish income-generating activities.

RELATED PUBLICATIONS

- *Rotary's Area of Focus*
www.rotary.org/myrotary/en/document/589
- Rotarian Action Groups Officer Directory
www.rotary.org/myrotary/en/document/714
- Rotarian Action Groups Annual Report
www.rotary.org/myrotary/en/document/713
- *Communities in Action: A Guide to Effective Projects*
www.rotary.org/myrotary/en/document/577
- *Community Assessment Tools*
www.rotary.org/myrotary/en/document/578

FIND OUT MORE

Email: actiongroups@rotary.org

Disaster Response

In general, news of disasters across the world is received through the normal news services on TV, radio and newspapers. Rotary's involvement starts when the District Governor in the affected area makes contact with Rotary International (RI) giving an up-to-date situation report and informing them of any action that needs to be taken by Rotary. This is often the need for fresh clean water, shelter and money for essential supplies and subsequent rebuilding.

The information from RI is passed to RIBI who in turn circulate it to all RIBI Districts, normally to the District Governor and the Co-ordinator of the International Committee.

Once received agreement is reached as to the best course of action that can be taken by the District and by individual Clubs and Rotarians. The nature of the recommended action will be dependent upon the scale, type and location of the disaster.

It is often the case that the immediate need is for shelter and clean, safe drinking water. If that is the case then Clubs would be urged to support ShelterBox and our own Aquabox scheme, run by the Rotary Club of Wirksworth.

As a disaster unfolds, the local area needs are more accurately identified and further information is circulated through the above chain. This information again will be passed to all clubs if it changes what is required or adds other elements to the requirement.

Any queries from Clubs about action required following a major international disaster should be made to PDG Rtn Wendy Watson.

RIBI Approved International Projects

All charities and projects of an international nature that have been examined, reviewed and considered worthwhile and suitable for support by Rotary Clubs are recorded on the 'Opportunities to Serve' section of International Resource Group page of the RIBI website – www.rotarygbi.org

The following instructions may help you to find the list of such charities and projects if you are not already familiar with the website.

Go to www.rotarygbi.org

Click on Members.

Click on Club & District Support.

This will bring up a list – look down the list till you find “*Opportunities to Serve*” – click on this. A list of RIBI approved projects, International and other, will be displayed in alphabetical order. You can then either look through the list or go to the organisation or project you are interested in.

Disaster -which product works best?

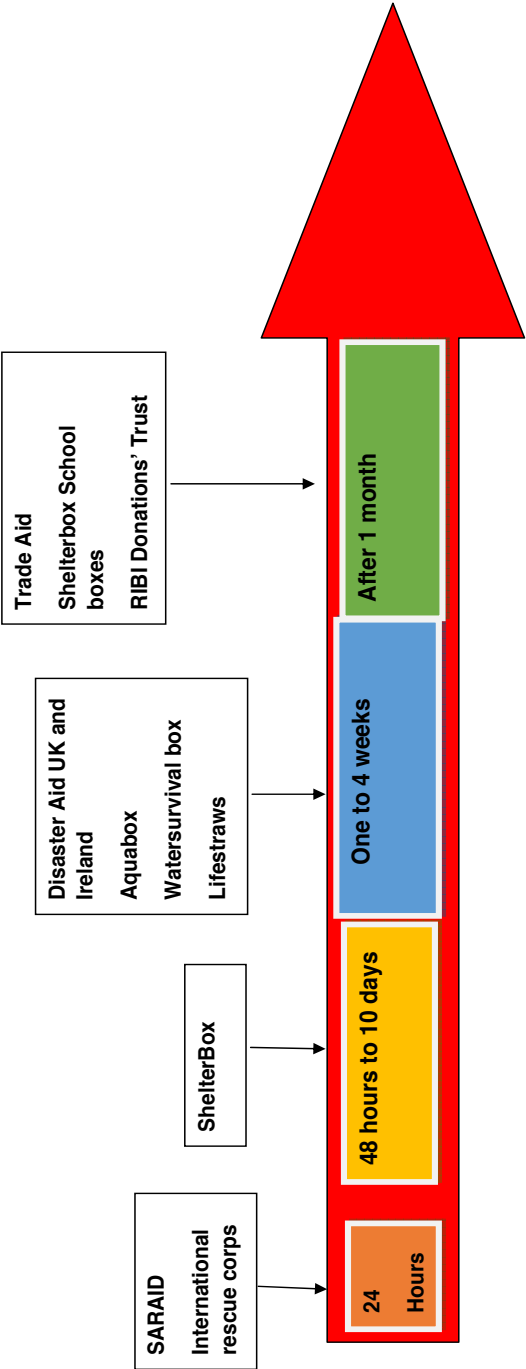
Shelter	Water	Urban relief	Post disaster support or community development
<p>Providing shelter, water and facilities post disaster</p> <p>SHELTERBOX: www.shelterbox.org</p> <p>Shelter box £590 ShelterBox contains a disaster relief tent for a family, thermal blankets and groundsheet, water storage and purification equipment, solar lamps, cooking utensils, a basic tool kit, mosquito nets and a children's activity pack.</p> <p>Shelter kits Shelter kits contain a selection of materials, including tools, ropes, fixings and heavy-duty tarpaulins, that can be used to make repairs on existing structures and to create emergency shelters</p> <p>A tent is £230 Water Filtration kit £40 Thermal blankets £20 Each Solar Light £15 each School kit £3 Shelter Repair kit £35</p> <p>Response within 48 hours to 10 days after the disaster after initial assessment has been made</p>	<p>Purification of unclean water</p> <p>AQUABOX : www.aquabox.org "A Gift of Life"</p> <p>"Aquabox Gold" is designed to support a family of five. It contains an "Aquafilter Family" capable of producing potable water at 1 litre/minute. It removes ALL bacteria and most viruses, including the Polio virus. Lifetime capacity > 100,000 litres</p> <p>The multi purpose box is a very robust, 75 litre water reservoir and is shipped with a broad range of Humanitarian Aid items that aid post-disaster family survival. Such as a solar lamp for the children and family to read by. A stock pot, cutlery, pick /shovel, wide range of hygiene items, basic baby care, educational support items, 3m x 2.7m tarpaulin, basic tools and a range of toys. Aquabox Gold £125</p> <p>"AquaFilter Community" is capable of producing at 6 litre/minute of drinking water from local contaminated water. Lifetime capacity >1,000,000 litres. This is designed to meet the needs of a Cottage Hospitals, Schools or small Local Communities. Aquafilter Community £250</p>	<p>Following earthquakes or situations where buildings collapse.</p> <p>S.A.R.A.I.D http://saraid.org.uk</p> <p>S.A.R.A.I.D is a British charity.</p> <p>S.A.R.A.I.D is on call 365 days a year, always ready to provide trained Search and Rescue personnel, free of charge to any country in need of assistance. S.A.R.A.I.D members are drawn from all walks of life.</p> <p>Length of time for deployment to the affected area is 24 hours</p>	<p>Post disaster support or community development Rebuilding lives</p> <p>Trade Aid www.trade-aid.org 01400 273737 Box - £425</p> <p>Each box contains specially selected supplies needed to provide people with a head start in recovering from a disaster, or other adversity, or to start working for themselves for the first time.</p> <p>Boxes for Builder Handyman Carpenter Mechanic Teacher Blacksmith Taylor/ seamstress Electrician</p>

Shelter	Water	Urban relief	Post disaster support or community development
<p>DISASTER AID UK AND IRELAND www.disasteraiduk.org</p> <p>An initial assessment is made following discussions with survivors and local rotary clubs and adapting aid according to need i.e. tents if required, kits or water filters or any part of the kit required.</p> <p>Family Survival kit - £430 Tent, thermal blankets, a selection of materials, including tools, ropes, water filters, cooking pots and utensils- box can be used as a mobile work bench</p> <p>Lifebox - £250 contains tools, clothes, baby care/hygiene items, toys and classroom equipment .</p> <p>Community tent - £1070 Can be used as a triage centre, school or a meeting place, made up of 4 modular pods</p> <p>1-3 weeks after disaster Donate but allow the organisation to decide how it will benefit the survivors, no donation too small</p>	<p>WATER SURVIVAL BOX www.worldwaterworks.org Box £150</p> <p>The Water Survival Box is a rigid, reinforced 54 litre plastic container that becomes a receptacle for water when emptied of survival items. It includes a Grifaid Aquafiliter Family filtration kit that can deliver up to 100,000 litres of clean water. This gives each member of a family of 5 ten litres a day for 5 years (or 100 people for 3 months). The box also contains other essential survival items; for health and hygiene, a kitchen set, simple tools and basic shelter including a tarpaulin sheet, and other household items. Cost of air freight is included in the price.</p> <p>Length of time to get boxes to the area 1-4 weeks. An initial assessment is made with local Rotary clubs and local NGOs to identify need and to arrange flights</p>	<p>International Rescue Corps http://www.intrescue.org/</p> <p>A nationwide organisation with an extensive training programme in urban search and rescue for the UK and overseas.</p> <p>Length of time for deployment to the affected area is 24 hours</p>	<p>Post disaster support or community development SHELTERBOX: www.shelterbox.org</p> <p>SchoolBoxes approximately £500 These contain essential supplies for teachers, including blackboard paint and chalk, along with school equipment for 50 children.</p> <p>This box is sent after 1 month</p>
Shelter	Water	Urban relief	Post disaster support or community development

	<p>Lifestraws http://www.lifestraw.org.uk/</p> <p>LifeStraw® water filters convert contaminated water into clean, safe drinking water.</p> <p>Personal lifestraw £10 LifeStraw Personal is a portable water purifier for prevention of common diarrhoeal disease.</p> <p>Family lifestraw £30 This will filter up to 18,000 litres of water enough to supply a family of five with safe drinking water for three years</p> <p>Lifestraw community</p>		<p>RIBI Donations Trust</p> <p>This is a Trust Fund supported by donations from Rotarians and members of the public following a RIBI appeal.</p> <p>A grant can be applied for to the Chairman of the RIBI Donations Trust via the RIBI Secretariat, if the following criteria are met: -</p> <ul style="list-style-type: none"> • address a community need and it will be sustainable • Benefits the community as a whole • Requires significant Rotary involvement and visible Rotary identification. • Rotary Club is responsible for the implementation and reporting of the projects progress and completion 	<p>DISASTER AID UK AND IRELAND www.disasteraiduk.org</p>
--	---	--	--	--

	Skyjuice water filtration system - £2700 Provide 10,000 litres of water a day for 10 years		
--	--	--	--

How long before aid reaches communities?



RIBI OTS (Opportunity to Serve) International Projects

Aquabox
Disaster Aid UK & Ireland
Doctor Bank
Guildford Rotary Eye Project
Hope & Homes for Children – inc. Rotary's Africa Hope
IMPACT Foundation
Jole Riders (Bikes 4 Africa)
Lifestraws
Literacy in a Box
Mary's Meals
Mercy Ships
Nepal Trust
Nyumbani
Pahar Trust Nepal
Pump Aid
Rotarians Eliminating Malaria in Tanzania (REMIT)
Rotary Dentaaid Dental Box
Rotary Jaipur Limb Project
Rotary Shoebox Scheme
Send a Cow
ShelterBox
Sightsavers
Trade Aid
Vision Aid Overseas
Voluntary Service Overseas (VSO)
Water Survival Box
WaterAid
Wheelchair Foundation UK
World Child Cancer

Aquabox

Of course the one charity which District 1220 is more than happy to support is Aquabox, a community project set up and managed by the Rotary Club of Wirksworth to provide safe drinking water, through the use of filtration units, and humanitarian aid to crisis zones around the world.

Since its formation in 1992, Aquabox has distributed more than 105,000 boxes to countries suffering from natural and man-made disasters, helping hundreds of thousands of people. As well as a water-filtration unit, each Aquabox contains a variety of humanitarian aid items, including cooking utensils, hygiene equipment, tools, shelter materials, baby and children's clothing and educational items.

In recognition of the contribution made by Aquabox to helping those in need and of the work put in by all the volunteers, the charity was very proud to receive the Queen's Award for Voluntary Service in June 2016.

Natural disasters happen all too often and when they do people are in desperate need of safe drinking water and humanitarian help. The charity relies on a regular income and support from Rotary to provide that help. Please do all you can to continue your support. To make a donation go to the Aquabox website:

www.aquabox.org

email to enquiries@aquabox.org

Telephone and Fax: 01629 825178

Rotary Friendship Exchange

The main aims of Rotary Friendship Exchange (RFE) can be summed up as:

- To see Rotary in action in other countries
- To see a country from the perspective of those who live there, rather than just as a tourist
- To make new and lasting friendships
- To develop relationships between your club and other clubs overseas, with the eventual aim of developing mutual aid projects
- To see the world, have a fantastic, exciting and cost effective holiday

A typical RFE party consists of 10-12 people (Rotarians and partners). The host District will plan an interesting schedule of visits, including places of interest, Rotary projects, club meetings etc. Party members are hosted by local Rotarians, but other costs are expected to be borne by the members of the visiting party.

Recent visits have been made to KwaZulu Natal, South Africa (District 9270), to Wai, south of Mumbai and Indore in India (Districts 3040 and 3132) and Alberta and NW Territory, Western Canada (District 5370).

In return, the visiting District hosts the return 'Exchange' visit, usually the following year.

Rotarian Keith Jones (Hope Valley) will be happy to advise anyone who may be interested.

Speakers 2017/18

International (General)

PDG Rtn Wendy Watson (Mexborough & District) wendy@mexboro.demon.co.uk

Aquabox

Various speakers from RC of Wirksworth

Co-ordinator – Rtn Mike Tomlinson rockchicks@aol.com

Bikes4Africa – Jole Rider

Rtn Ian Ord (Sheffield Vulcan) iangord@icloud.com

Gambia Schools Appeal

Rtn Dr Tom McConnell (Bolsover) tommccconnell@bolsover-rotary.org.uk

Guildford Rotary Eye Project

PDG Rtn Wendy Watson (Mexborough & District) wendy@mexboro.demon.co.uk

Rtn Brin Chawla (West Bridgford) brin.brintech@talktalk.net

Hope and Homes for Children

Rtn Catherine Butt (National Speaker Co-ordinator) catherine.butt@hopeandhomes.org

Hope Community Village, India

Rtn Cheryle Berry (Clay Cross) cheryle.berry@btinternet.com

Kenyan Educational Support

Rtn Simon Brister (Matlock) simonbrister@btinternet.com

Rtn John Pearce (Sutton-in-Ashfield) john@johnpearce.org.uk

Kids Aid Tanzania

Rtn Elaine Minningham (Ilkeston) sec_ilkestonrc@yahoo.co.uk

Rtn Dr Colin McCardle – Trustee info@kidsaidtanzania.org.uk

Palliative Care in the Cameroon

Rtn Dr Catherine D'Souza (Castle Donington) catdsouza100@gmail.com

Pokhara Rehabilitation, Nepal

Rtn Ian Ward (Dronfield) i.ward768@btinternet.com

REMIT – Rotarians Eliminating Malaria in Tanzania

PDG Rtn Roger Pursey (Kirkby-in-Ashfield) rogerpursey@gmail.com

Rotary DentaId Dental Box

Rtn Iain Corran (Chesterfield Scarsdale)

Rtn Professor Derrick Willmot (Chesterfield Scarsdale)

Rtn Norman Andrews (Clay Cross)

Rtn Robin Greetham (Dronfield)

iainlowerbullens@btinternet.com

derrick.willmot@btinternet.com

Tel: 01246 451183

greetham968@gmail.com

The Rotary Foundation

PDG Rtn Peter Moralee (Bretby)

Rtn John Cavey (Derby South)

peter_moralee@tiscali.co.uk

john@kvcs.co.uk

The Rotary Foundation – End Polio Now

Rtn Greg Maskalick (Church Wilne)

atea8keys@googlemail.com

Rotary Jaipur Limb

Rtn Dave Ashley (Belper and Duffield)

Tel: 01773 823357

Sand Dams

Rtn John Spence (Vale of Belvoir)

Rtn Ben Benfield (Derby)

jandrspence@btinternet.com

bennamenna@yahoo.co.uk

Shelterbox

PDG Rtn Peter H Swift (Eckington & District)

peter@phswift.free.online.co.uk

WaterAid

PDG Rtn John Bendall (Nottingham)

john.bendall@talk21.com

Website – Rotary Showcase

PDG Rtn Wendy Watson (Mexborough & District)

wendy@mexboro.demon.co.uk

Meeting Dates 2017/18

Tuesday 2nd May 2017

Setting the agenda for 2017/18

District International Meal, final preparation

District Conference Llandudno, preparation

Tuesday 1st August 2017

District Conference, final arrangements

District International Meal 2018, discussion

Tuesday 6th February 2018

District International Meal, preparation

District Assembly arrangements

District International Handbook

Tuesday 8th May 2018

Setting the agenda for 2018/19

District Conference Scarborough, preparation

